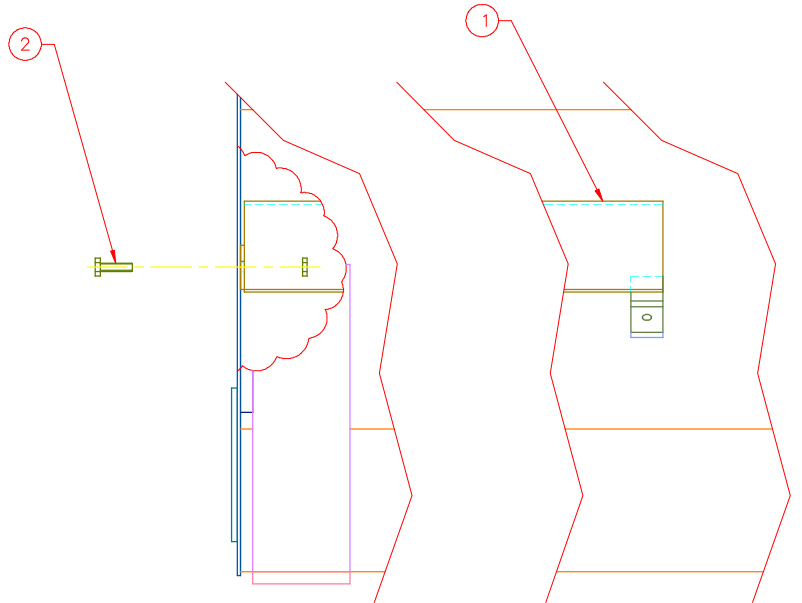
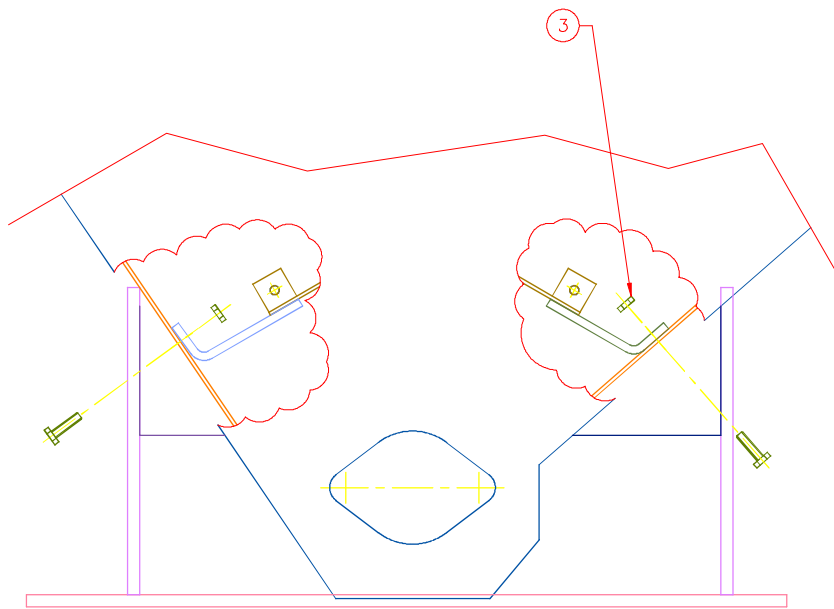


This drawing contains confidential proprietary information of Triple C, Inc. and is subject to return upon request. The furnishing of this drawing is not to be construed as the grant of any license, express or implied, to manufacture, have manufactured, use or sell the structures shown hereon.



ITEM	MATERIAL \ DESCRIPTION	LENGTH	QTY	DRAWING NO.
1	HF18-14 BAFFLE		1	30-1301
2	BO 1/4x1 HCS		4	
3	BO 1/4 HNN		4	

TRIPLE C
INC.

P.O. BOX 248, SABETHA, KS 66534
(785) 284-3674 FAX (785) 284-3931

TOLERANCES:
Unless otherwise specified:
XXX .010
XXX .005
XXXX .0005
X/X 1/32
ANGLE 0°30'

SHEET
_ OF _

SCALE:
1:4

DRAWN BY:
CHRIS ABERLE
09/01/06

ASSEMBLY NUMBER:
HF18-23

DRAWING NUMBER:
30-1306

REV

TITLE:
AUGER BAFFLE MOUNT,
HF-1800